

PRESIDON-ML Series Auto Mounting Press



*Perfect Surface.
Always*

ML-L1A Series

- HMI Interface allows users to set module names and store various parameter values, making it convenient for operations
- Fully automatic for pressuring, heating, and cooling with one-touch
- Acrylic powder can be applied for producing a highly transparent specimen with a good edge retention
- Hydraulic system with high stability
- Electric heating system for a rapid heating
- Suitable for iron, brass, and other non-fragile materials with high temperature and high pressure resistance

Introduction & Features

HMI Interface

Compensating pressure, heating temperature, cooling temperature, heating time and cooling time can be set.



Memory Mode

30 sets memory mode can memorize different parameters, which is easy for the users to opt for. The sets of memory mode can be also customized.



Easy Operation

One-touch activates the machine with all functions of auto pressure adding, auto heating, and auto cooling, which is easy to be operated by inexperienced users.

Adjustable Compensating Pressure

High-temperature resistance but without high-pressure resistance samples can be prepared through a customized program. It increases the flexibility of the preparation.

Acrylic Powder

Besides the bakelite powder, the acrylic powder can be also used. The acrylic powder can be applied for producing a highly transparent specimen with good edge retention.



Cooling Temperature Setting

The cooling temperature can be set from 10 °C to 100 °C according to the requirement. Samples can be taken out earlier than the normal parameter setting. Preparation time can be greatly shortened by applying a pre-heat mode.

Lower Ram with Chamfering Design

Chamfering design can avoid the waste or the damage of SiC paper or polishing cloth during the grinding/polishing process.

Thread-Locking Cover

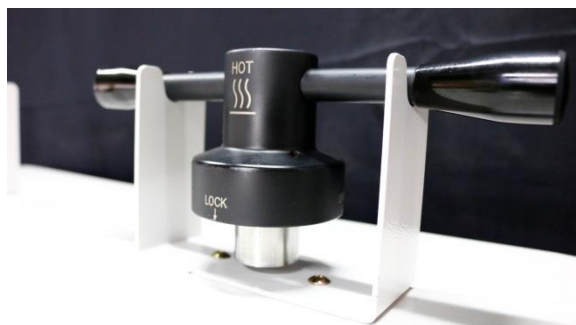
It significantly increases the top cover's strength, preventing damage to the mold tube or top cover caused by improper operation.



Introduction & Features

Special Bracket for Handle

Thread-locking cover can be put on the special bracket. This increase a space efficiency.



Filter Assembly

The water filter assembly effectively filters minerals and impurities in the water, ensuring smooth water flow and prolonging the lifespan of the water valve.

Electric heating device and hydraulic design

An electric heating device can increase the temperature quickly and stably. A hydraulic pressure compensation design is also stable.

Spacer (option)

With a spacer, the user can mount two specimens at the same time. It will greatly reduce the sample preparation time.

Accessories

Submerged Pump

| Order No. | Specification |
|------------|------------------------|
| QWP06002 | 1 ϕ -220V-50/60HZ |
| QWP06002-1 | 1 ϕ -200V-50/60HZ |



Spacer(Optional)

| Size (mm) | Ordering No. | Size (mm) | Ordering No. |
|--------------|---------------|-------------|--------------|
| ϕ 25 | ML25H0219A | ϕ 32 | ML32H0219A |
| ϕ 25.4 | ML25.4H0219A | ϕ 38.1 | ML38.1H0219A |
| ϕ 30 | ML30H0219A | ϕ 40 | ML40H0219A |
| ϕ 31.75 | ML31.75H0219A | ϕ 50 | ML50H0219A |

Working Table (Option)



Ordering No.

TF01

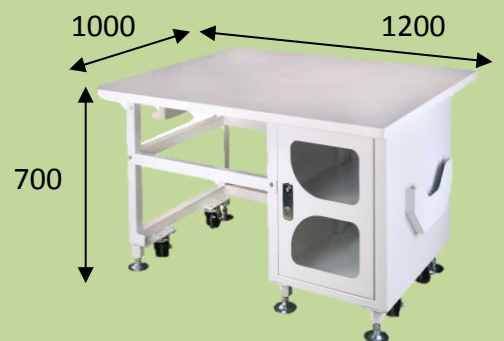
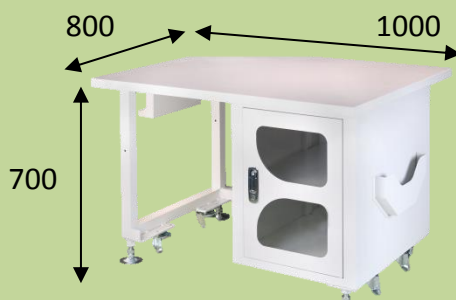
TF02

Size (L*D*H)

1000*800*700 mm

1200*1000*700 mm

Sample

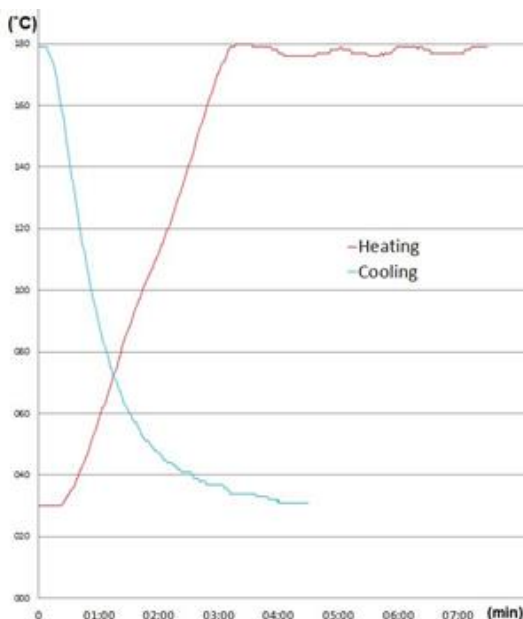


(mm)



Specifications

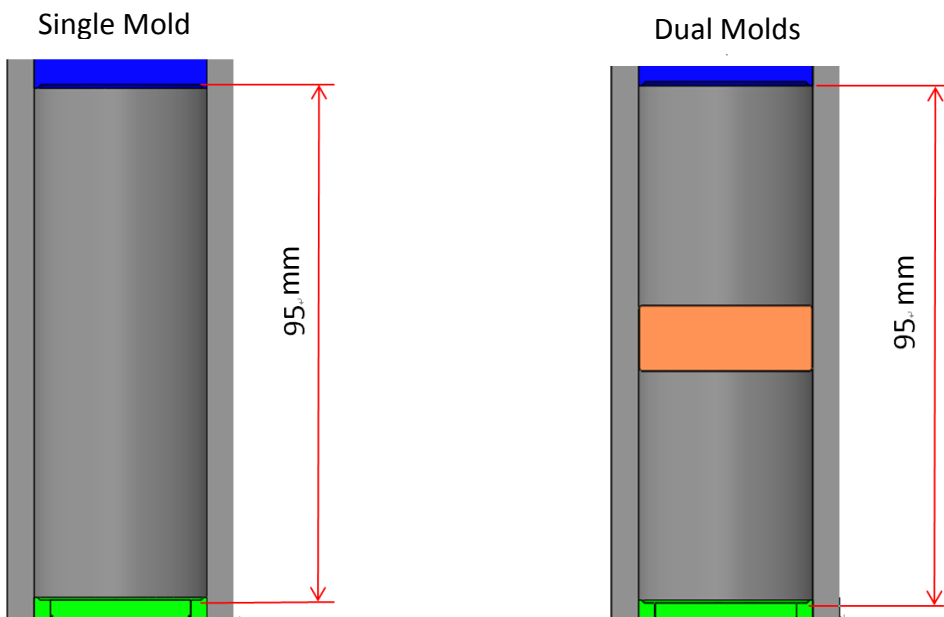
| Model | L1A | | | | | | | |
|--|---|-------|------------------------|--------|----------------------|-------|------------------|-----|
| Sample Size (mm) | Ø25 | Ø25.4 | Ø30 | Ø31.75 | Ø32 | Ø38.1 | Ø40 | Ø50 |
| Sample Quantity | 1~2pcs per time (Opt for a space for 2pcs) | | | | | | | |
| Spacer (Option) | Ø25 (ML25H0219A) | | Ø31.75 (ML31.75H0219A) | | Ø40 (ML40H0219A) | | Ø50 (ML50H0219A) | |
| | Ø25.4 (ML25.4H0219A) | | Ø32 (ML32H0219A) | | Ø38.1 (ML38.1H0219A) | | | |
| | Ø30 (ML30H0219A) | | | | | | | |
| Noise Level (dB) | 65~75 | | | | | | | |
| Heating Power (W) | 1600 | | | | 2400 | | | |
| Total Power (W) | 2200 | | | | 3000 | | | |
| Temperature (°C) | 50~250 (Special temperature requirements can be customized) | | | | | | | |
| Cooling Temperature Adjusting Range (°C) | 10~100 | | | | | | | |
| Pressure (kg/cm ²) | 50~350 (711~4978 psi/ 49~343 Bar) For a dia. 50mm cylinder, the pressure can be set to 50~250kg/cm ² . The mounting powder will also affect the max. pressure. | | | | | | | |
| Heating Time (s) | 1~3600 (60 mins) | | | | | | | |
| Cooling Time (s) | 1~1800 (30 mins) | | | | | | | |
| Memory Mode (sets) | 30 (Parameter setting: pressure compensation, heating temperature, heating time, cooling temperature and cooling time) | | | | | | | |
| Machine Dimension WxDxH (mm) | 590x660x630 | | | | | | | |
| Machine Weight (kg) | 73 | | | | 74 | | | |
| Inlet and Outlet Pipe (mm) | 10mm low pressure pipe (Inner diameter Ø10 – Outer diameter Ø15) | | | | | | | |
| Cooling Device | Connect to recirculating water for auto cooling | | | | | | | |
| Power Supply (V) | AC 220 1Ø | | | | | | | |
| Accessories | Sample Clip 1pc, Funnel 1pc, Spoon 1pc, Mounting Powder 1kg (2.2lb), Acrylic Powder 2kg (4.4lb), Filter 1set, Auto Connector 2pcs, Pipe Clip 6pcs, Self-tapping Screw 6pcs | | | | | | | |



1. Sample-Ø32mmx20mm (t).
 2. Testing results will be different according to weather condition, materials, sample sizes, and cylinder sizes.
- (The data is for referencing only)**

Parameters

Sample Size (Phonetic Formaldehyde Resin)



| | Mounting Size (mm) | Mold Volume (mm ³) | Max. height (mm) | Powder Weight (g) |
|-------------|--------------------|--------------------------------|------------------|-------------------|
| Single mold | Ø25 | 21598 | 44 | 31 |
| | Ø25.4 | 22295 | 44 | 32 |
| | Ø30 | 31102 | 44 | 44 |
| | Ø31.75 | 34836 | 44 | 49 |
| | Ø32 | 35387 | 44 | 50 |
| | Ø38.1 | 50164 | 44 | 71 |
| | Ø40 | 55292 | 44 | 78 |
| | Ø50 | 86394 | 44 | 122 |
| Dual molds | Ø25 | 8590 | 17.5 | 12 |
| | Ø25.4 | 8867 | 17.5 | 13 |
| | Ø30 | 12370 | 17.5 | 18 |
| | Ø31.75 | 13855 | 17.5 | 20 |
| | Ø32 | 14074 | 17.5 | 20 |
| | Ø38.1 | 19952 | 17.5 | 28 |
| | Ø40 | 21991 | 17.5 | 31 |
| | Ø50 | 34361 | 17.5 | 48 |

Consumables (Option)



Acrylic Powder

Order No. Thermosetting, High Transparent and Easy to Observe.
(30g per time)

| | |
|------------|------|
| S030202-1 | 1 kg |
| S030202-5 | 5 kg |
| S030202-10 | 10kg |

Bakelite Powder (Phenolic Formaldehyde Resin)

Order No. Thermosetting and High hardness.
(30g per time)

| | | |
|----------|-------|-------|
| S03001-1 | Black | 1 kg |
| S03001 | Black | 25 kg |
| S03002-1 | Brown | 1 kg |
| S03002 | Brown | 25 kg |
| S03003-1 | Green | 1 kg |
| S03003 | Green | 25 kg |
| S03004-1 | Red | 1 kg |
| S03004 | Red | 25 kg |

Conductive Bakelite Powder

Order No Thermosetting, and Phenolic formaldehyde resin.
(30g per time)

| | | |
|----------|--------------|--------|
| S030106 | Carbon-based | 0.45kg |
| S0301061 | Copper-based | 0.45kg |

| Order No. | Specimen Clip | Package (pcs/pack) |
|-----------|--|-----------------------|
| S17003 | Stainless clip for metal specimen. Able to be employed with hot mounting machines. Size Ø10 x 7 H (mm) | 100 |

Top Tech Distributors



TOP TECH



TOP TECH MACHINES CO.,LTD

No.6-3,Siyuan Rd.,Dali,Taichung,412 Taiwan
Tel +886-4-2406-3799 Fax:+886-4-2406-0960
E-mail: top@toptech.tw http://www.toptech.tw

Agent

Top Tech reserves the right to change our products without notice.